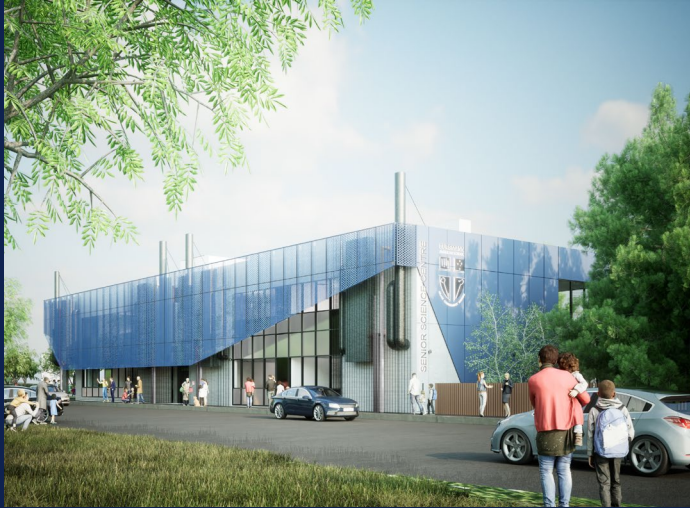


ACT CHAPTER EVENT #1 2024

LEA ACT is thrilled to reunite for our first event of 2024 to learn from Burgmann Anglican School and Cox Architecture about their new Senior Science Centre. The site tour itself will conclude with networking drinks to connect with peers from across the industry, hear about some of the latest trends, and discuss the opportunities for our vibrant sector.



Render courtesy of Cox Architecture



Photos courtesy of Burgmann Anglican School

IMMERSIVE EDUCATION BURGMANN ANGLICAN SCHOOL SENIOR SCIENCE CENTRE

+ MEMBER MIXER

When: Thursday 11 April 2024

Time: 5.00 - 7.30pm

Where: Burgmann Anglican School
Valley Campus
4 The Valley Ave, Gungahlin, ACT

Cost: Members - \$35
Non-Members - \$60

[**BOOK HERE @ LEA EVENTS**](#)

The demand for deep, experiential learning for senior students has never been greater. The Burgmann Anglican School Senior Science Centre was designed to engage students as scientists in mature, practical laboratories, that respect the school's modes of learning.

Students are preloaded as they enter the space with "Science on Display" one of the key design principles. Ripples of learning stem from the teacher in the unique classroom design, with bespoke desks, that encourage practical, interactive and relational learning.

While the focus was on creating a highly practical learning space, the setting of the building alongside the creek has been celebrated, providing opportunity for the outside space to inspire the study of Earth Sciences and Biology.

The event is open to both members and non-members. Your peers and colleagues are welcome and we encourage you to bring along a +1.

As this is a catered event and attendee numbers are limited, all attendees must book their ticket.

Professional Development

This event is accredited for formal professional learning points as follows:

- For **architects** this event will attract 1 formal CPD point

Parking and Meeting Point

Parking can be accessed from The Valley Avenue. Please follow the path down to E Block where the event will commence.

VALLEY CAMPUS MAP



Campus Map courtesy of Burgmann Anglican School

SUPPORTING SPONSOR

Interface[®]

EVENT SPONSOR

Build&
Exceptional project outcomes.