

IMMANUEL COLLEGE-NEW DISCOVERY CENTRE & PRECINCT



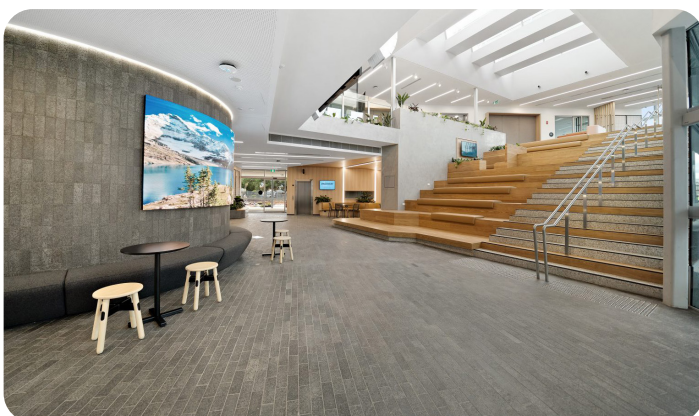
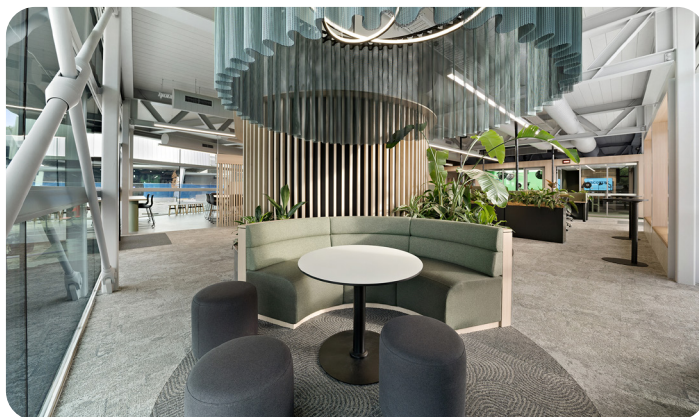
Immanuel College's new Discovery Centre and Precinct has been designed to inspire and nurture the next generation of innovators, critical thinkers, and problem-solvers.

It is central to Immanuel's ground-breaking new program – Year 10: The Year of Discovery – where students are guided to better understand themselves, explore opportunities, and prepare for Year 11 and 12, and life after school.

"We wanted to create a precinct that is more than just a building", said Principal Kevin Richardson. "It is not continuing to just do what we have always done in a new building, but teaching and learning in new ways".

Key features of the newly finished Discovery Precinct include:

- o A new home base for Year 10 students with new Studios, while also being open to all senior students.
- o The Beyond Centre, featuring facilities for young entrepreneurs to operate and fine tune their ideas (eg. a pitch lab), with making facilities, and expanded facilities supporting media activities (eg. video & podcasting).
- o Environmental and biophilic design principles to support a more productive and healthier environment for student wellbeing.
- o Three-quarters of the site has been earmarked for landscaping and gardens, with indoor/outdoor learning spaces allowing students and staff to access expanded landscaped areas as part of their educational programs and wellbeing.
- o State-of-the-art technologies and flexible learning spaces to nurture diverse learning experiences and facilitate emerging students' progressive ideas, critical to their future career endeavours.
- o A series of zones including:
 - _ Social Zones: Places to engage, communicate and establish adult working relationships.
 - _ Learning Zones: Facilities to enable traditional and contemporary teaching and learning.
 - _ Collaboration Zones: Places to work together to study and pitch new enterprise concepts.
 - _ Wellbeing Zones: Social, active and mindful spaces.



Where: IMMANUEL COLLEGE
32 Morphett Road, Novar Gardens

When: Tuesday 28 November 2023

Time: 4:00pm - 5:30pm

Cost: Members and Students \$10.00 + GST
Non-members \$15.00 + GST

LESA Annual Chapter Reporting Meeting
will be held following the event from 5:30pm - 6:00pm

EVENT SUPPORTED BY

